

1 Lime Crescent, Old Trafford, Trafford, M16 0NW

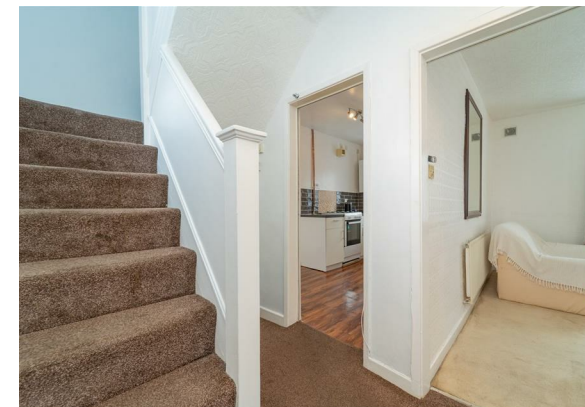


JP&Brimelow
ESTATE AGENTS

Offers In The Region Of £325,000

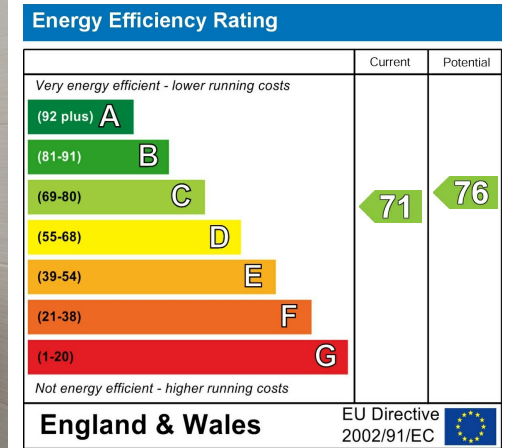


VIDEO TOUR AVAILABLE A delightful & well-presented THREE DOUBLE BEDROOM, Semi-detached property. Occupying a generous corner plot, this spacious three double bedroom semi-detached property is perfectly situated on a popular residential road in Old Trafford. Within walking distance of a range of local amenities, Seymour and Hullard Parks are close by. Longford Park, Stretford Leisure centre, and a number of fantastic schools are just a short distance away. Excellent transport links are available via Seymour Grove and the Trafford Bar Metrolink station, providing quick access to the City Centre and MediaCityUK. In brief, the well-designed accommodation comprises an entrance hall, a dining room positioned to the front of the property, a spacious lounge to the rear, a fitted kitchen with access to the rear garden, and a three-piece wet room completing the ground floor. To the first floor, a landing leads to three well-proportioned double bedrooms, a two-piece bathroom, and a separate W.C. The property further benefits from gas-fired central heating, a side garden leading through to a private rear enclosed garden, and a driveway providing off-road parking.





EPC Chart



Tenure: **Freehold** Council Tax Band: **B**

First Floor

Ground Floor



JP & Brimelow Estate Agents Ltd
 430 Barlow Moor Road, Manchester, M21 8AD
 Tel: 0161 8822233
 E: sales@jpbrimelow.co.uk www.jpandbrimelow.co.uk



JP & Brimelow
 ESTATE AGENTS

NOTICE: JP & Brimelow Estate Agents Ltd for themselves and for the vendors or lessors of this property whose agents they are give notice that:
 (i) the particulars are set out as a general outline only for the guidance of intending purchasers or lessees, and do not constitute, nor constitute part of, an offer or contract;
 (ii) all descriptions, dimensions, references to the condition and necessary permissions for use and occupation, and other details are given in good faith and are believed to be correct but any intending purchasers or tenants should not rely on them as statements or representations of fact but must satisfy themselves by inspection or otherwise as to the correctness of each of them;
 (iii) no person in the employment of JP & Brimelow Estate Agents Ltd has any authority to make or give any representation or warranty whatever in relation to this property.

jpandbrimelowstateagents

@jpandbrimelow